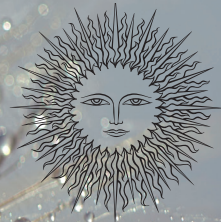
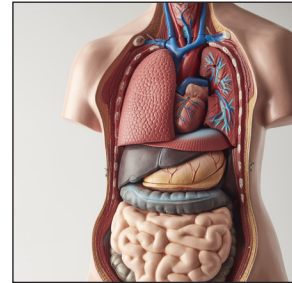
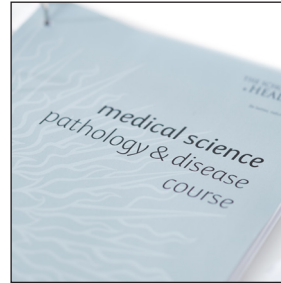


expand

pathology & disease
home study courses
inside · insight



THE
SCHOOL OF HEALTH®



Discover what goes on inside the human body when things go wrong. Our Pathology & Disease (P&D) courses are designed to enable you to gain a more informed understanding of disease processes, and to understand the basic principles by which orthodox medicine operates.

We offer three highly regarded courses designed to help enhance your training or practice:

Pathology & Disease for

- 1. Natural Health*
- 2. Nutrition*
- 3. Homeopathy*

Why study Pathology and Disease?

Pathology & Disease can be studied either on its own for general interest, as part of your chosen therapy, or to fulfil pre-entry requirements for practitioner training. It is a fascinating subject that will open your eyes to one of humanity's greatest struggles - health and disease.

The aim of our Pathology & Disease course is to provide you with a sound understanding of the basic principles by which conventional medicine operates. A key objective is to help you carry out your particular form of practice with a more informed understanding of disease processes. This in turn can lead to better and safer treatment for your patients. The emphasis is on the management of cases that are commonly seen in clinical practice, together with recognition of warning signs and symptoms that may require you to refer your patient to another practitioner. The course syllabus is equivalent to UK vocational 'A' Level standard and NVQ Level 4, and has been compiled after careful consideration of the requirements of various therapies, colleges and societies of alternative medicine.

*"This course was
one of my all-time
favourites"*

Sally, Student



What will this course do for me?

At the end of this course you will be able to compare the philosophical differences between conventional and alternative medicine. You will also be able to state common terms used in conventional medicine, and understand common medical investigational procedures. In addition to being able to state the clinical features of the many disease conditions studied, you will also be able to explain how treatment by conventional medicine affects treatment by alternative medicine. You will also learn appropriate courses of action to take in particular clinical situations, along with how to liaise with other health professionals.

The study experience

The course follows a blended learning approach, offering multiple study methods including written Units (delivered in the post), movie lectures, quizzes, online sessions, social media, tutor group meetings, and personalised support from your tutor. All delivered through our bespoke Online Learning System.

Study is guided through the 6 Units, with descriptions, references, and diagrams to support the syllabus.

Self-assessment questions help reinforce learning, and at the end of each Unit, you upload written assignments to your tutor for full written feedback.

Core content

The core content for all the P&D courses is the same, with the learning being tailored to either the natural health practitioner, the nutritionist or the homeopath. See overleaf for the unit contents.

Entry requirements

Although our Pathology & Diseases courses can be taken in their own right and no prior medical training is required, our Anatomy & Physiology courses provide the ideal learning foundation for progression into Pathology & Disease.

As well as being widely accepted by many course providers and associations this course is also accredited by the: Complementary Medical Association (CMA).

Pathology & Disease

Units: 1-6

Study Hours: 175 - 200

Course length: 12 months

Enrolment period given: 24 months

Included: Course material, books, movie lectures, marking

Study options: Correspondence or e-learning

Certificate: Diploma in Pathology & Disease

Study Options: Correspondence (paper) or e-learning (online)

Courses for: Natural Health, Nutrition or Homeopathy

Unit one

Pre-conceptual biology to weaning

Cell biology

Following fertilisation

Birth

The breast

Breast feeding

Breast disorders

Unit two

From infancy to puberty

Newborns and infants

Young children

Unit three

Adolescence and puberty

Digestive system

Unit four

The Respiratory System

Cardiovascular system (CVS)

Unit five

Urinary system

Men's health

Women's health

Unit six

Musculo-skeletal system

Endocrine system

Mental Health

Movie Lectures:

Unit 1: 1 hour and 44 minutes

Unit 2: 2 hour and 39 minutes

Unit 3: 1 hour and 19 minutes

Unit 4: 2 hour and 14 minutes

Unit 5: 1 hour and 51 minutes

Unit 6: 2 hour and 22 minutes

Get more information

We would love to hear from you, so please contact us now for further information and help with all your questions.

The School of Health

Orchard Leigh, Rodborough Hill, Stroud, GL5 3SS, UK

T: +44 (0)1453 709 709

E: info@soh.uk

www.schoolofhealth.com

